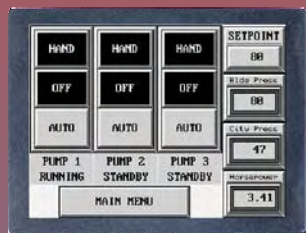


Is Your Water Booster System Costing You More Than It Should?

Most existing domestic water booster systems run at full speed with a valve passing the appropriate amount of water to the building. This is analogous to driving your car with the accelerator on the floor and controlling your speed with the brake! Since your building only needs a small fraction of the total flow capacity a majority of the time, this method of operation is remarkably inefficient.

Additionally, these older systems rely on mechanical components such as pressure reducing valves, bladder tanks and mercury switches. These items are failure-prone and a prime cause of service calls, draining your maintenance budget.



Technology Advances Have Made Variable Speed Controls Affordable

Lucas Technologies has taken advantage of these technology advances to develop an economical booster system that matches water flow with the actual demand. An on-board computer monitors demand in real-time and constantly adjusts the pump speed. Since the pump is running at only the required speed (rather than full-on), a significant energy savings is realized.

With the exception of the pump and motor, the EconoBoost System has no moving parts. The failure-prone mechanical components have been eliminated.

The simple to use EconoBoost system also has sophisticated built-in diagnostics and safeguards to protect the pump and motor against dry running, line breaks, etc. Faults are displayed in plain English on the operator's display.

Lucas Technologies can replace your existing control system or provide a complete engineered system with new, high efficiency pumps and motors.

Contact Us Now To Start Saving Money

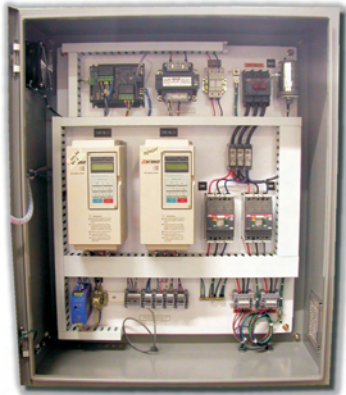


Tri-State Area
Distributor:

G.T Smith & Associates

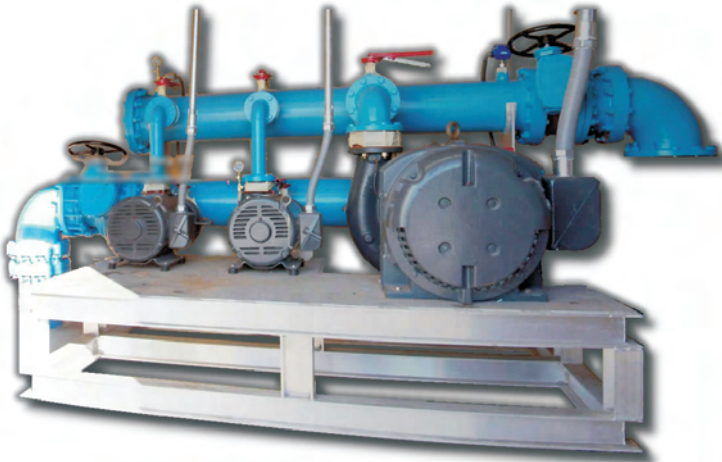
Laurel Springs, NJ

856-782-0474



Standard Features

- UL508 Certified Control Panel
- 6" LCD Touchscreen Interface
- Non-Volatile Program Backup
- Password Protected Settings
- VFD Constant P Lead/Lag/Alt Control
- Low Flow "Sleep" Function
- Through Door Service Disconnect
- Touch-Safe Components
- Three Phase Lightning Protection
- SS Suction And Discharge Sensors
- SS Or Aluminum Support Skid
- SS / Copper / PVC / HDPE Headers
- Time Stamped Alarm/User Access Log
- Online Alarm / Troubleshooting Guide
- Real Time Pressure/Power Display
- Historical Pressure/Power/Speed Trends
- Pump Elapsed Run Time Meters
- Auto Backup Run Mode If Control Fails
- Remote Alarm Contact Relay
- SCADA Ready



**Power Savings:
\$6,500 / Year**

**Maint. Savings:
\$1000 / Year**



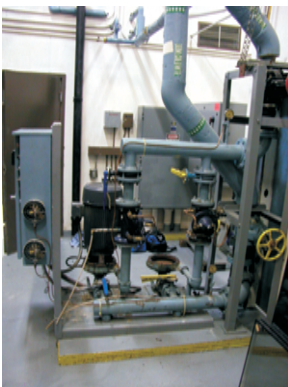
19 Story Office Bldg.
St. Petersburg, FL

**Power Savings:
\$2,400 / Year**

**Maint. Savings:
\$650 / Year**



21 Story Condos
Daytona Beach, FL



Before



After



Before



After